

# Pressure switch

## Type DV7.1

With one adjustable change-over switch

### Superior conception

Piston type pressure switch with one change-over switch, easily adjustable over the entire pressure range, with scale for presetting of the pressure switching point.



### Real Swiss quality

Designed for rough operating conditions, insensitive to hydraulic overloads, specially developed piston seal, housing made of anodized light metal alloy, degree of protection IP 65, with instrument plug according DIN 43650.

### Easy to install

Ideal overall dimensions, can be mounted in any operation position, turnable under full pressure around the longitudinal axis, instrument plug turnable by 4 x 90°.

(HLP-oils according DIN 51524), other mediums on request.

### Damping

For the protection of the pressure switch we recommend the installation of a damping element as for example a throttle screw with double fitting according to the table below.

### Universal application

7 pressure ranges for the optimal adaptation to any operating pressure, suitable for mineral oils

### Technical data

Type	Part no.	Pressure [bar]	Overload max. [bar]	Double fitting G 1/4" - G 1/4" Part no. 3683718		Double fitting G 1/2" - G 1/4" Part no. 3683678	
				Throttle screw mm	Part no.	Throttle screw mm	Part no.
DV7.	60.33006	60	130	0.5	3688099	0.5	3688096
DV7.	100.33010	100	360	0.5	3688099	0.5	3688096
DV7.	180.33018	180	360	0.5	3688099	0.5	3688096
DV7.	250.33025	250	500	0.5	3688099	0.5	3688096
DV7.	400.33040	400	800	0.2	3688087	0.2	3688059
DV7.	600.33060	600	1200	0.2	3688087	0.2	3688059
DV7.	1000.33100	1000	1200	0.2	3688087	0.2	3688059

## Type DV7.1

With one adjustable  
change-over switch

### Electrical switching capacity

AC-15	2 A / 125 V... 250 V
DC-13	2 A / 30 V
DC-12	4 A / 30 V

### General information

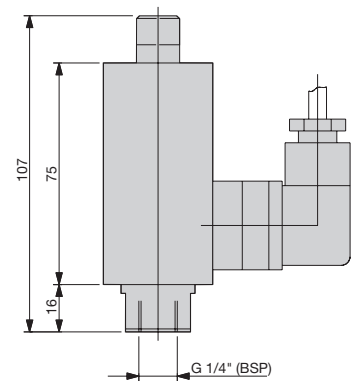
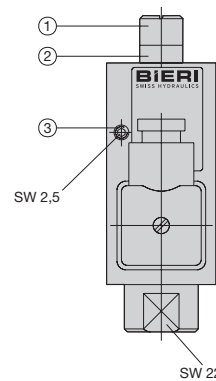
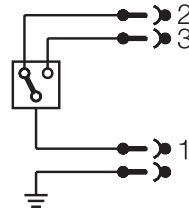
Switching hysteresis of the scale end value	5 - 10 %
Repeat accuracy of the scale value	1 %
Degree of protection	IP 65
Class of insulation	I
Standard	IEC 60947-5-1

### Setting of the switching point

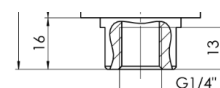
- (1) Bright scale-/spindle part
  - (2) Dark scale-/spindle part
  - (3) Spindle locking
- Loosen the spindle locking (3)
  - Combine the dark scale part (2) with the dark spindle part (2) for lower pressure setting and the bright scale part (1) with the bright spindle part (1) for upper pressure setting
  - Tighten the spindle locking (3)



### Wiring diagramme

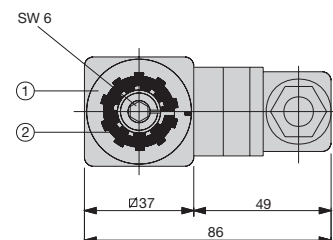


### Hydraulic connection



Double fitting

Throttle screw



### Bieri Hydraulik AG

Könizstrasse 274  
CH-3097 Liebefeld  
Tel. +41 31 970 09 09 | Fax +41 31 970 09 10  
info@bierihydraulics.com | www.bierihydraulics.com  
2/2

The information in this brochure relates to the operating conditions and applications described.  
For applications and operating conditions not described, please contact the relevant technical department.  
Subject to technical modifications.

DV7-1\_1702